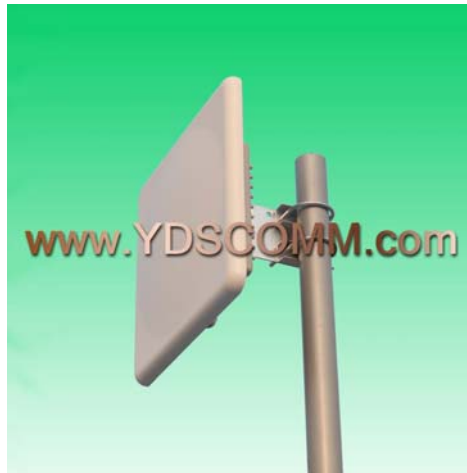


**YDS2458PT1720V1-N(F)****2400-2500 MHz 17 dBi 5150-5850 MHz 20 dBi Vertical Polarization Patch Antenna**

Antenna Model No.	YDS2458PT1720V1-N(F)
Frequency Range	2400-2500 / 5150-5850 MHz
Polarization	Vertical
Gain	17 / 20 dBi
Horizontal Beamwidth	22 ° / 11 °
Vertical Beamwidth	22 ° / 11 °
Front-to-back ratio	≥25 dB
Nominal Impedance	50 Ohms
VSWR	≤ 2
Maximum Power	50 Watts
Connector	N Female
Dimensions	306×306×25 mm
Weight	1.4 kg
Reflector	ABS
Colour	White
Adjustable Angle	0 ~ 30 °
Operating temperature	-40 ~ 60 °C
Wind Load	60 m/s
Mast Mount Diameter	35-50 mm